

Expression of interest to partner with PLAN INTERNATIONAL KENYA

LOCATIONS	Kwale County
DESIRED SECTORS/ AREAS OF SPECIALIZATION	<ul style="list-style-type: none">• Sexual and Reproductive Health and Rights (SRHR)• Prevention and response to all forms of gender-based violence & discrimination against girls & young women• Youth-led and Innovative Partnerships' Solutions on Job Creation• Humanitarian Response, Resilience and Peace Building and Cohesion• Education
APPLICATION DEADLINE	30 th September 2025

Contents

1. Background	3
1.1.1. Plan International Kenya	3
1.1.2. Our Program and Sponsorship Scope	3
1.1.3. Program delivery model	4
1.1.4. Plan International Kenya partnerships model	4
2.0. Purpose of the Expression of Interest	5
3.0 Minimum Requirements	5
3.1 Requirements for partnership	5
4.0 Application Process	5
4.1 Submission details	5
4.2 Review and selection	5
Annex 1	6

1. Background

Plan International is a rights-based development and humanitarian organization committed to improving the lives of all children. As an independent organization with no political or religious affiliations, we strive for a fair and equitable world where children's rights and gender equality are upheld. Since our establishment, we have built strong partnerships that span across 70 countries. Our global strategy, "All Girls Standing Strong: Creating Global Change" (2022-2027), aims to positively impact the lives of 200 million girls over the next five years.

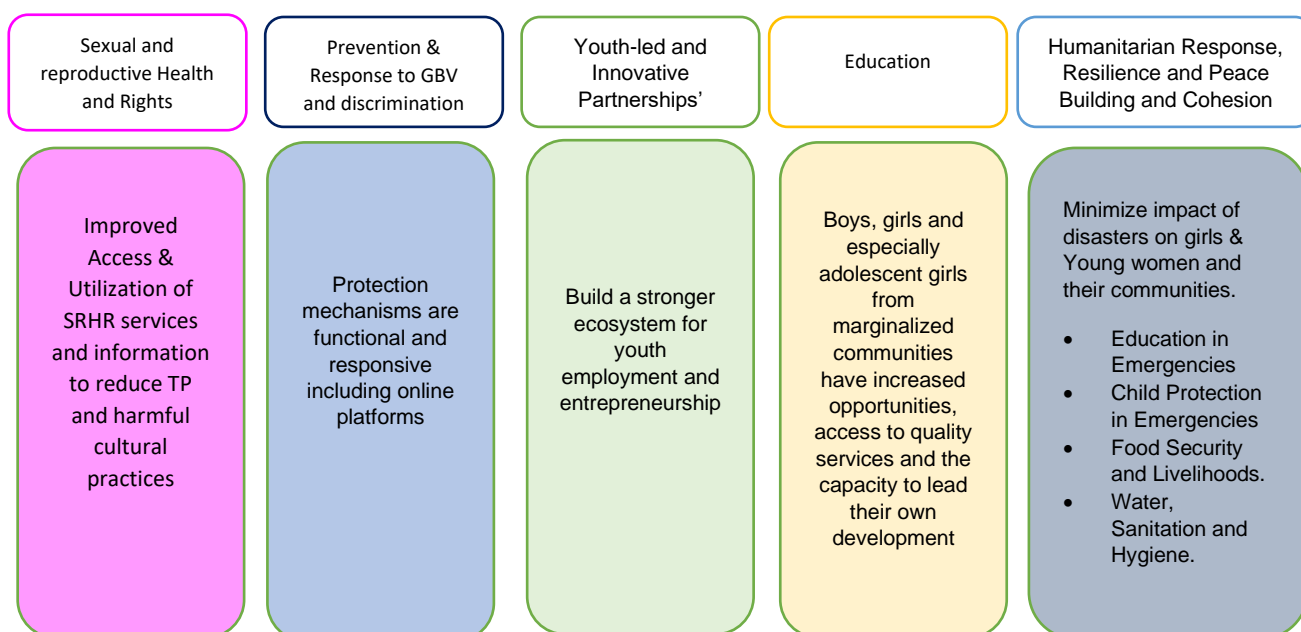
Our approach focuses on collaborating with partners to achieve meaningful changes in the lives of girls, while also strengthening the legitimacy of Plan International as a leader in gender-transformative change. To accomplish this, we prioritize the enhancement of our programming and advocacy efforts, as well as the empowerment of civil society. Additionally, our global strategy emphasizes the importance of adaptable and context-specific partnering methods, including the expansion of humanitarian initiatives and engagement with youth as drivers of positive change.

At Plan International, we understand that successful partnerships rely on a range of factors, including people, values, attitudes, skills, and actions. By fostering a culture of collaboration and shared responsibility, we can create lasting improvements in the lives of children around the world.

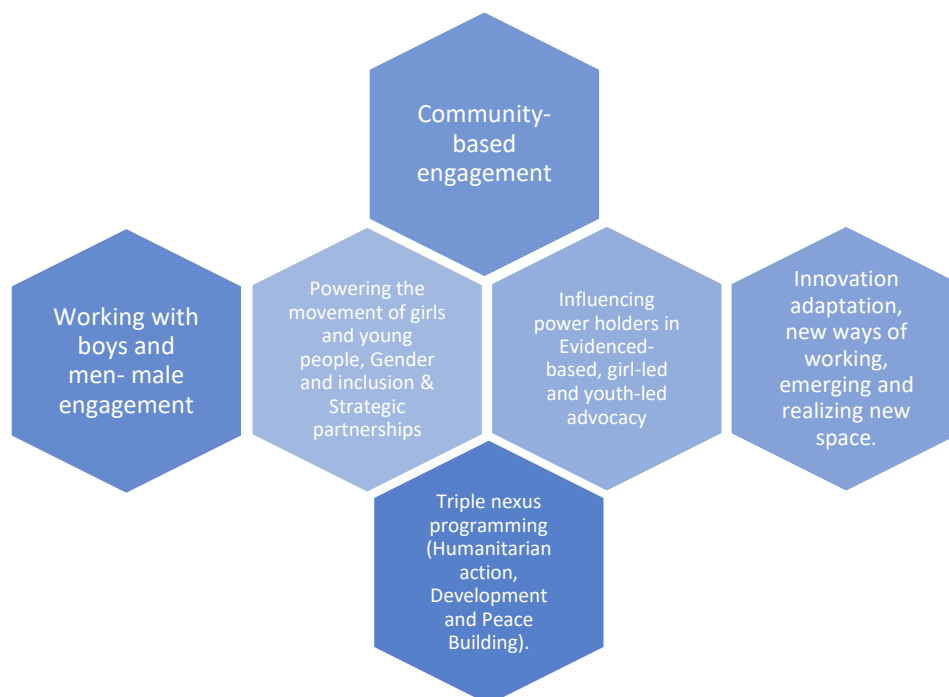
1.1.1. Plan International Kenya

With more than four decades of experience in implementing its programmes, Plan International Kenya (PIK) has expanded its operations to 12 geographical areas across the country. These areas include Nairobi, Machakos, Kajiado, Tharaka-Nithi, Siaya, Kwale, Kilifi, Homa Bay, Kisumu, Turkana, Marsabit, and Tana River Counties. This wide reach allows PIK to make a significant impact in improving the lives of children, families, and communities in various regions of Kenya.

1.1.2. Our Program and Sponsorship Scope



1.1.3. Program delivery model



1.1.4. Plan International Kenya partnerships model

In Kenya, we recognize the significance of partnerships in amplifying the scope and impact of our programs. By collaborating with like-minded organizations and institutions, we can pool our resources, expertise, and networks to achieve greater results and improve the lives of more children. We acknowledge the numerous advantages of partnerships, including increased efficiency, credibility, and scalability, as well as the opportunity for mutual capacity-strengthening and learning. By working together, we can leverage our collective strengths to address the complex challenges facing children and communities, ultimately creating a brighter future for all.

We collaborate with various stakeholders, including children's groups, community groups, civil society organizations, government institutions, private and public foundations, academic institutions, and multilateral and bilateral donors to:

1. Achieve a common goal of delivering quality, evidence-based programs and influencing work that advance children's rights and gender equality
2. Create sustainable impact through short, medium and long-term partnerships
3. Amplify the voices of children and young people
4. Pool resources, skills, and knowledge to reach more people and deliver better programs
5. Benefit from the skills, knowledge, and resources of others and share own skills, knowledge, and resources
6. Continuously improve understanding of partnerships and how to build and nurture them in practice.

2.0. Purpose of the Expression of Interest

Plan International Kenya invites expressions of interest from eligible organizations to partner in advancing children's rights and gender equality. We aim to expand our partnerships with local and national organizations, including youth-led, women-led, and community-based groups, as well as research and learning institutions registered in Kenya. Our focus is on development and humanitarian interventions in Kwale County, with expertise in climate change adaptation, SRHR, youth skills and entrepreneurship, humanitarian action, and peacebuilding. We value partnerships built on trust, communication, shared commitment, and recognition, working with like-minded entities to create sustainable impact for children, youth, and communities.

3.0 Minimum Requirements

3.1 Requirements for partnership

- i. Be a non-profit Community Based Organization, non-governmental organization, Research and or Academic Institutions registered in Kenya
- ii. Existing presence and operations in Kwale County.
- iii. Programmatic alignment to thematic area(s) and sector(s) listed under section 2.0.
- iv. Provide responses to all questions on Annex 1

4.0 Application Process

4.1 Submission details

Due Date	30th September 2025
Submission Email	kenya.bids@plan-international.org Reference: "PIK EOI local partnerships_Kwale"
Submission requirements	<ol style="list-style-type: none"> 1. Cover letter stating the expression of Interest and current Partners and areas of programming 2. Copy of applicant's organization registration certificate 3. Completed Expression of Interest Template (Annex 1) 4. Three Most recent completed project reports aligned to the area interest 5. Most recent Needs Assessment reports (or other forms of assessments) 6. Current Organogram, including if relevant organizational Board 7. For CBO's recommendation letter from State department of Social Services.
Enquiries/Questions	Send any enquiries/Questions to: Kenya.Partners@plan-international.org

4.2 Review and selection

1. All Expressions of Interest will be evaluated by an independent selection committee based on the established selection criteria.
2. Organizations that meet or exceed the minimum scoring threshold will progress to the next phase of the selection process, which involves a comprehensive assessment of their organizational capacity and a reference check.
3. Detailed Feedback will be provided to all applicants that who will be engaged in the Mutual appraisal stage. **Please note that due to the large number of applications being processed, we may not be able to provide feedback to all applicants.**

Annex 1

Local partner shortlisting questionnaire (Annex 1)

To whom it may concern,

Plan International Kenya thanks you for completing this questionnaire, the first step in our partnership selection process. We seek collaboration with local non-profits as long-term investments, focusing on capacity building, knowledge sharing, and support. Kindly complete the questions in details.

Name of your organization	
Name and position of person filling out the form	Name: Position:
What is the focal point contact details from your organization for partnerships?	
Indicate all program thematic focus areas that your Organization implements, aligned to section 3.1 above.	
Are you a member of any clusters/ sectors and technical working groups, if so please list?	
What other forums do you attend as an Organization, if any? List them	
Is your organization legally registered to work in Kenya?	

Operational Areas. Have you implemented any activities in 2020-2025 in the following Counties		List of sub-counties your organization has implemented any activities in between 2020-2025
1. Kwale	Yes/No	
Operational overview of 2020-2023		
2. What was/is the approximate total budget of your organization in 2024 and 2025	/Amount	

3.	Does the organization have its own bank account registered in its own name? If not how does the organization usually receive funds?	Yes/No	
4.	Do you have supporting financial documentation on your programs e.g Copies of any audit reports or statements from the last 3 years.	Yes/No	
5.	What is your current number of salaried staff	Number of persons	
6.	How many staff are based in Kwale	Persons per County (please list)	
7.	What is the number of volunteers you work with if any?	Number of persons	
8.	What is the process for identifying and recruiting staff for paid positions?	Brief statement	
Physical presence			
9.	Do you have a physical office in the County/ies where you have operations?	Yes/No	
10.	How many sub-offices do you have?	/Number	
11.	Where is your sub-office(s) located?	Indicate locations	
12.	How many staff are based in the County/ies?	Persons per County (please list)	
Program Overview			
13.	Do you have any active grants? If yes who are your current funders?	Yes/No Indicate donors	
14.	How does your Organization work with girls and boys(children) and youth?	Brief statement	
15.	Do you sit in any technical working groups, If yes, specify	Yes/No	

16.	Does your organization have procurement policy guidelines in place? If YES, briefly indicate how they are applied.	Brief statement	
17.	Do you have a functioning project monitoring system in place? If yes can you please provide a brief overview of your capacity.	Yes/No	
18.	Do you have a complaints and feedback mechanism?	Yes/No Brief statement	
19.	Do you have a safeguarding policy?	Yes/No	

- END -